



HURACÁN WASH ST

PHOTOMETRY



AYRTON
Digital Lighting



Total Flux	36210 lm (@zoom 128, fan mode stage, Goniometer)
-------------------	--

CCT @LED engin	6000 (±400K)
CCT @open	6000 (±400K)
Ra @open	80 (±2)
TLCI	65
TM-30	Rf: 81.5 Rg: 92.2

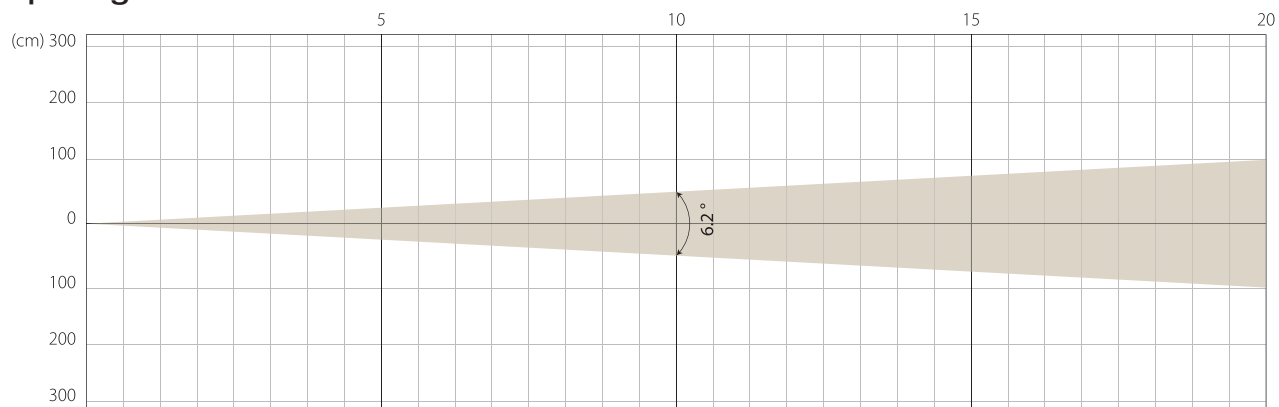
Fan Mode	Noise Level (dBA)	by Goniometer (lm)	by Sphere (lm)
Auto	45,5	34871	43589
Stage	51,2	36210	45263
Silence	38,8	25955	32444
Super Silence	34,1	15035	18794

Note: noise measured @1m distance, static status, ambient 31 dBA.

Voltage / Power	100-240V, 50-60Hz	1,470 W
Fixture Dimension / Weight	494 x 789 x 294 mm	42.1 kg
Packing Dimension / Weight	730 x 570 x 710 mm	60.1 kg

MIN ZOOM

Beam Opening

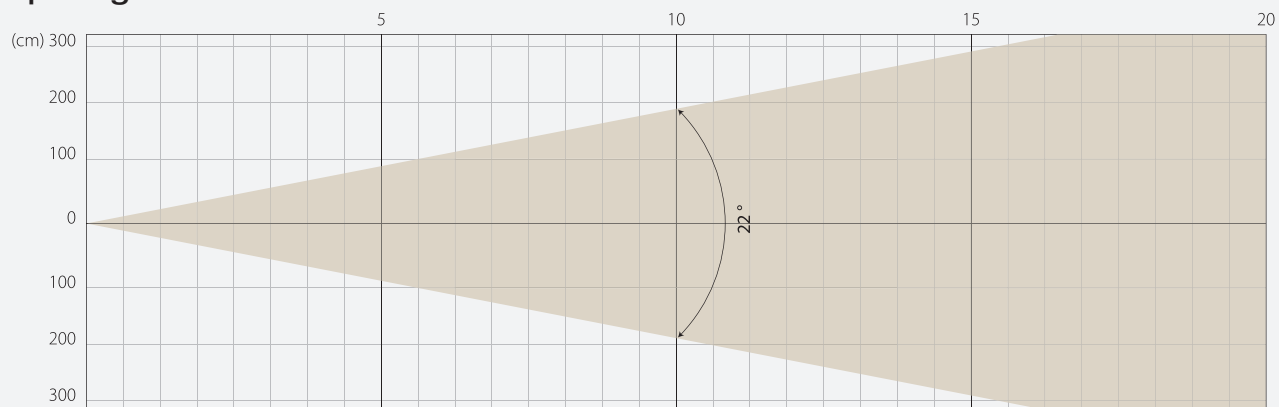


Intensity

Distance (m)	5		10		15		20	
unit	lux	diameter	lux	diameter	lux	diameter	lux	diameter
White	84330	0,54	21083	1,08	9370	1,62	5271	2,17

MIDDLE ZOOM

Beam Opening

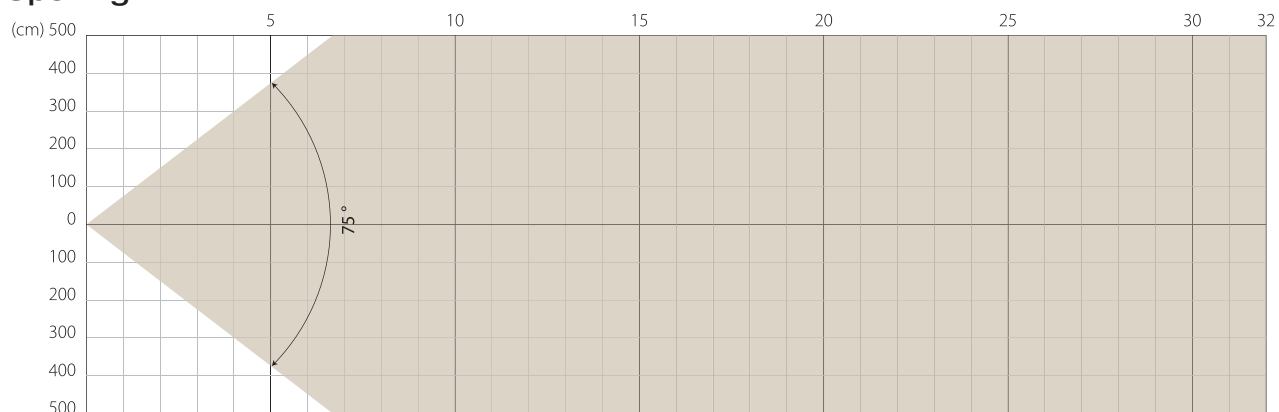


Intensity

Distance (m)	5		10		15		20	
unit	lux	diameter	lux	diameter	lux	diameter	lux	diameter
White	10853	1,94	2713	3,89	1206	5,83	678	7,78

MAX ZOOM

Beam Opening



Intensity

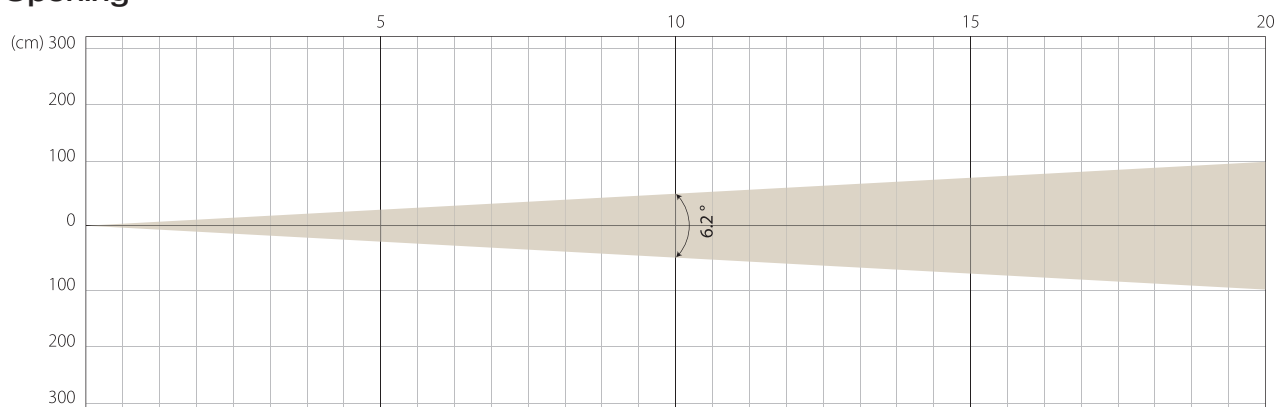
Distance (m)	5		10		15		20	
unit	lux	diameter	lux	diameter	lux	diameter	lux	diameter
White	1715	7,67	429	15,35	191	23,02	107	30,69

STAGE MODE

NATIVE CRI GREATER THAN 80

MIN ZOOM

Beam Opening

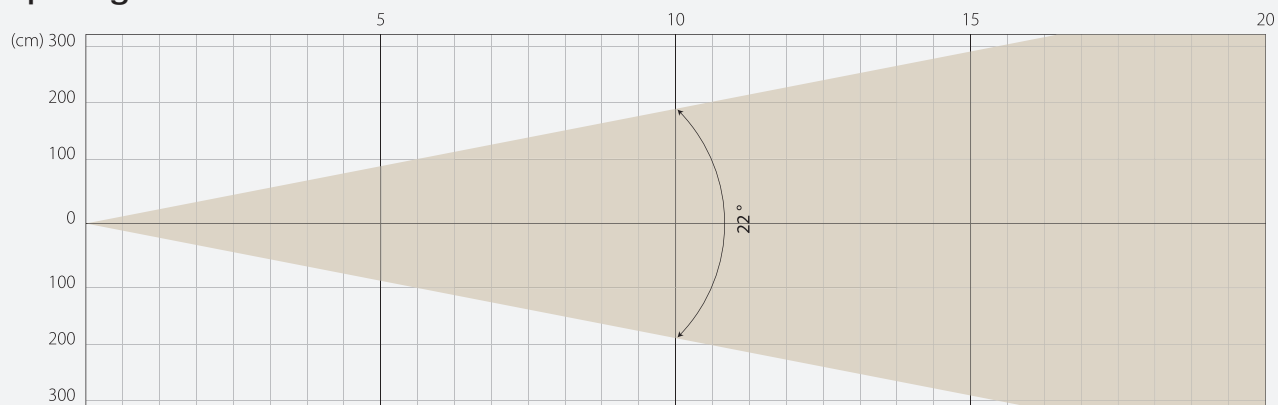


Intensity

Distance (m)	5		10		15		20	
unit	lux	diameter	lux	diameter	lux	diameter	lux	diameter
White	90333	0,54	22583	1,08	10037	1,62	5646	2,17

MIDDLE ZOOM

Beam Opening

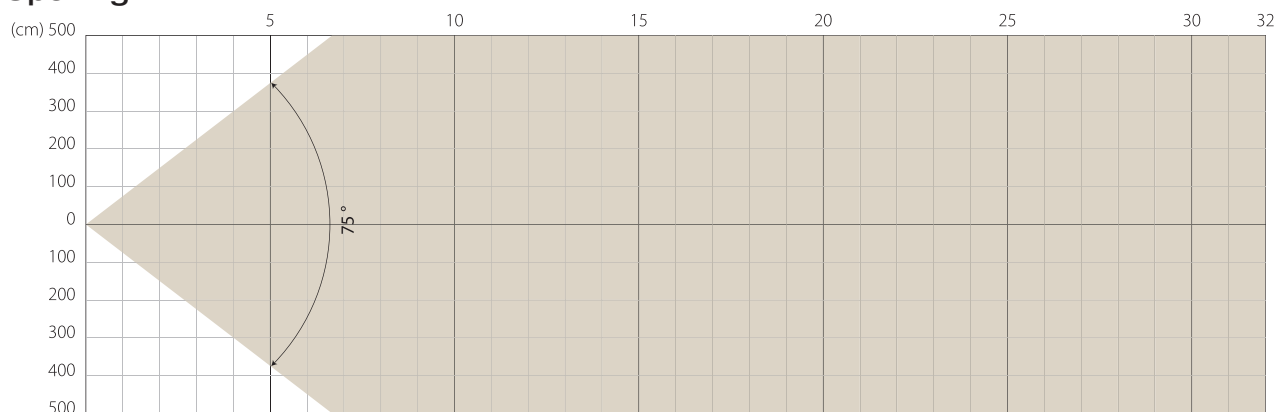


Intensity

Distance (m)	5		10		15		20	
unit	lux	diameter	lux	diameter	lux	diameter	lux	diameter
White	11337	1,94	2834	3,89	1260	5,83	709	7,78

MAX ZOOM

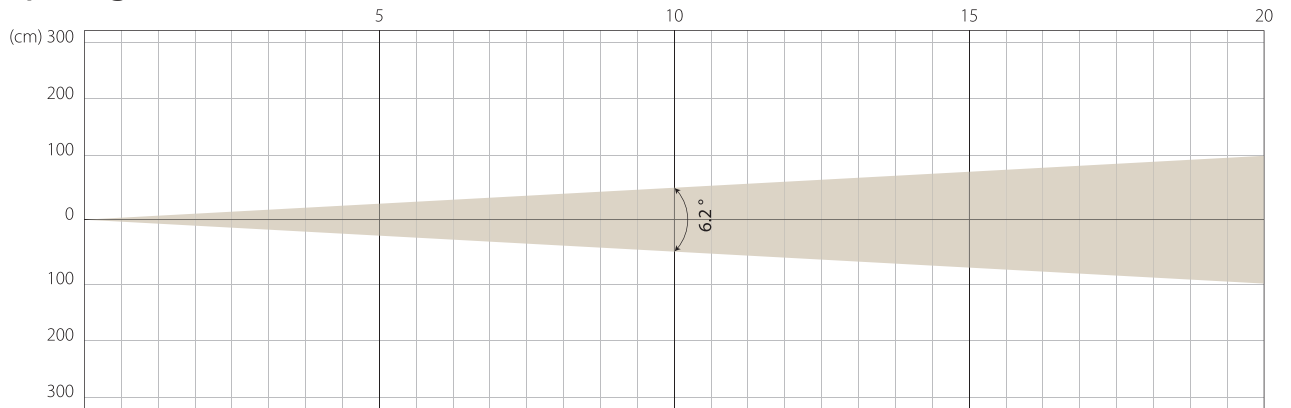
Beam Opening



Intensity

Distance (m)	5		10		15		20	
unit	lux	diameter	lux	diameter	lux	diameter	lux	diameter
White	1766	7,67	442	15,35	196	23,02	110	30,69

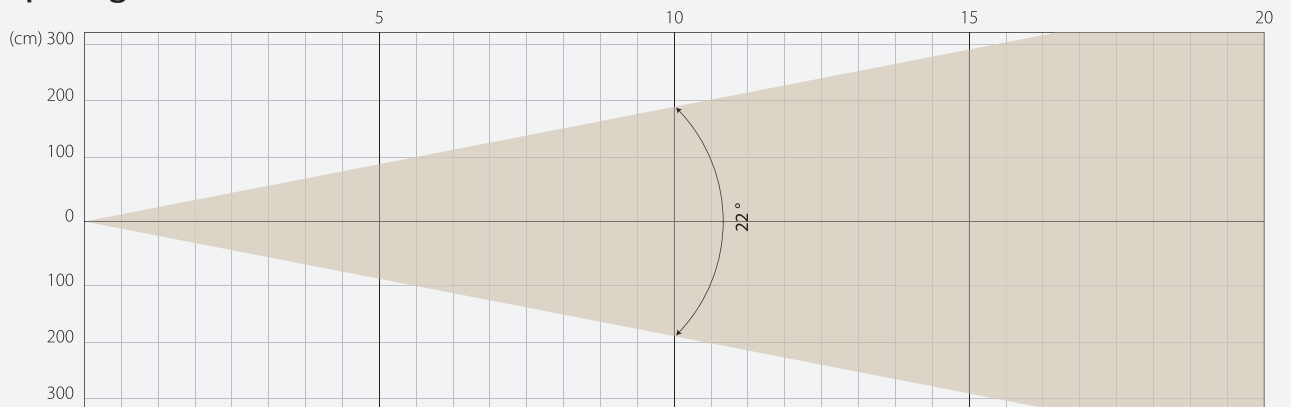
Beam Opening



Intensity

Distance (m)	5		10		15		20	
unit	lux	diameter	lux	diameter	lux	diameter	lux	diameter
White	65428	0,54	16357	1,08	7270	1,62	4089	2,17

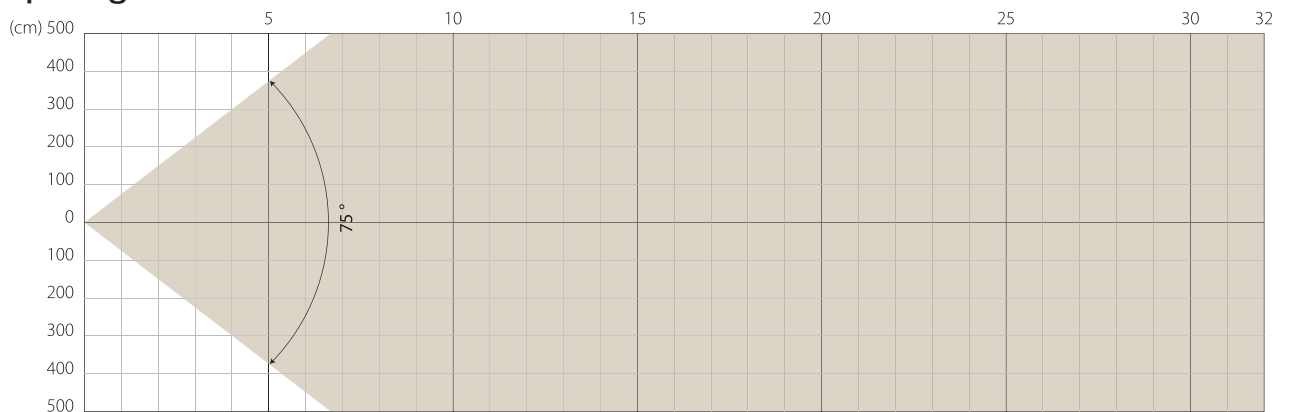
Beam Opening



Intensity

Distance (m)	5		10		15		20	
unit	lux	diameter	lux	diameter	lux	diameter	lux	diameter
White	8038	1,94	2009	3,89	893	5,83	502	7,78

Beam Opening



Intensity

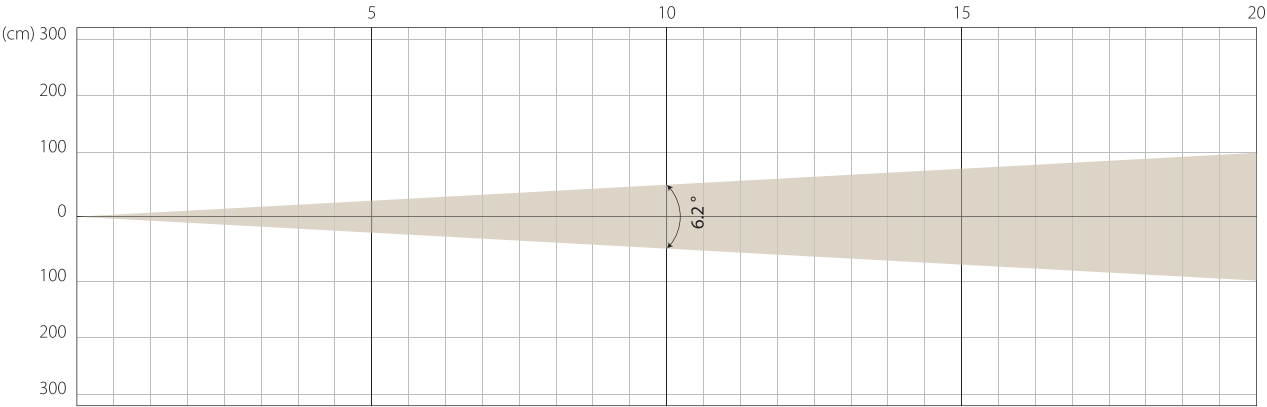
Distance (m)	5		10		15		20	
unit	lux	diameter	lux	diameter	lux	diameter	lux	diameter
White	1230	7,67	307	15,35	137	23,02	77	30,69

SUPER SILENCE MODE

NATIVE CRI GREATER THAN 80

MIN ZOOM

Beam Opening

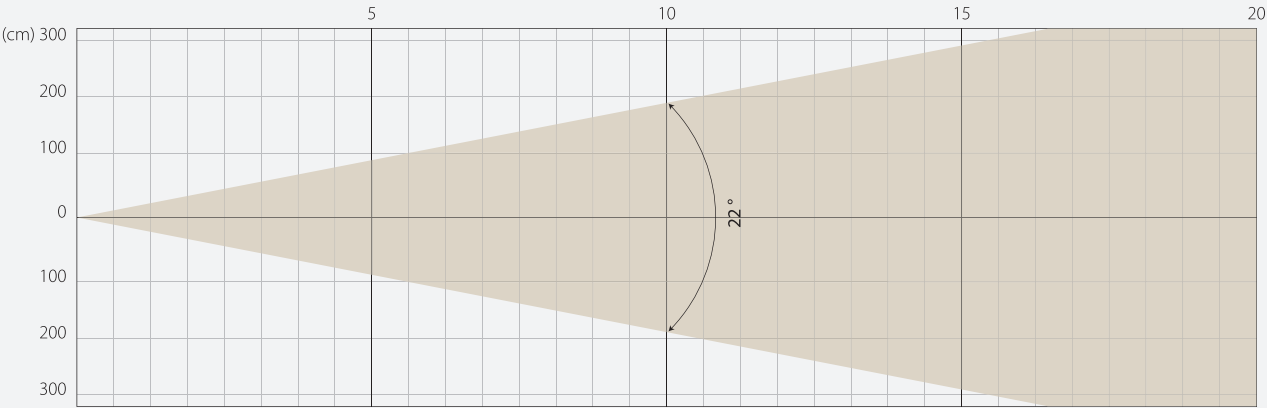


Intensity

Distance (m)	5		10		15		20	
unit	lux	diameter	lux	diameter	lux	diameter	lux	diameter
White	37839	0,54	9460	1,08	4204	1,62	2365	2,17

MIDDLE ZOOM

Beam Opening

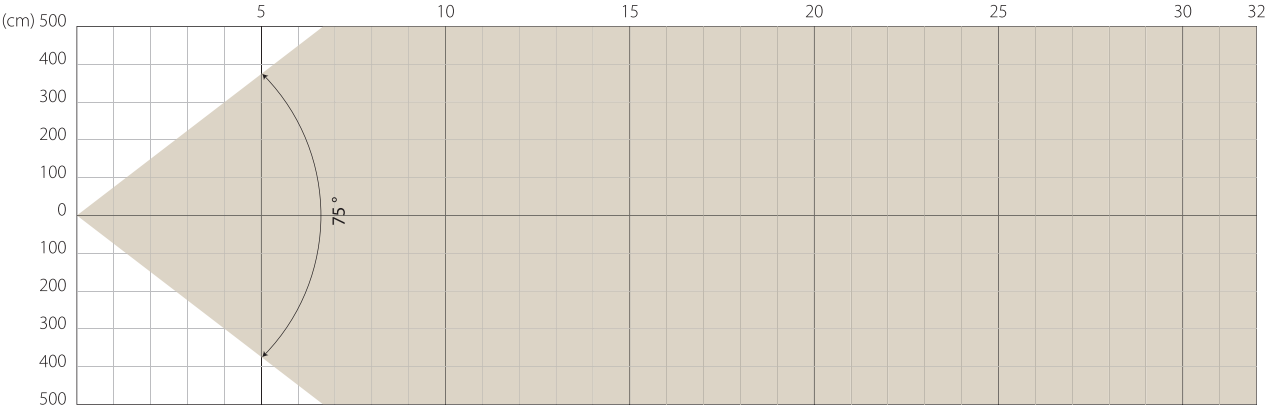


Intensity

Distance (m)	5		10		15		20	
unit	lux	diameter	lux	diameter	lux	diameter	lux	diameter
White	4610	1,94	1152	3,89	512	5,83	288	7,78

MAX ZOOM

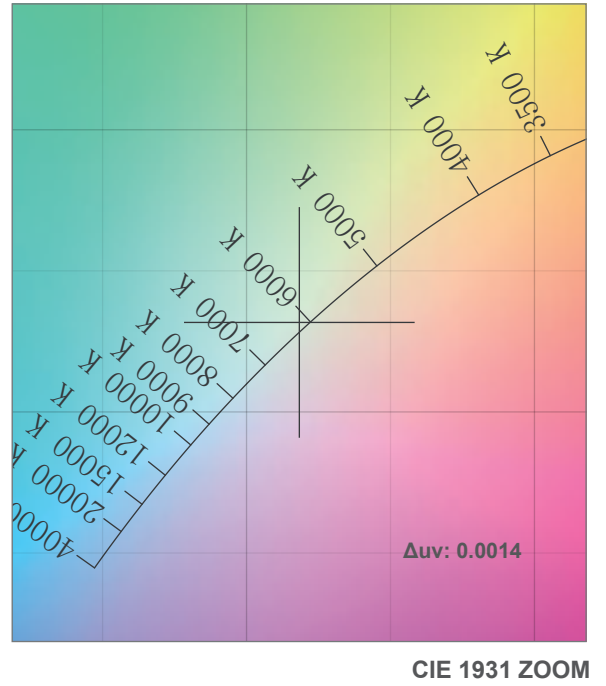
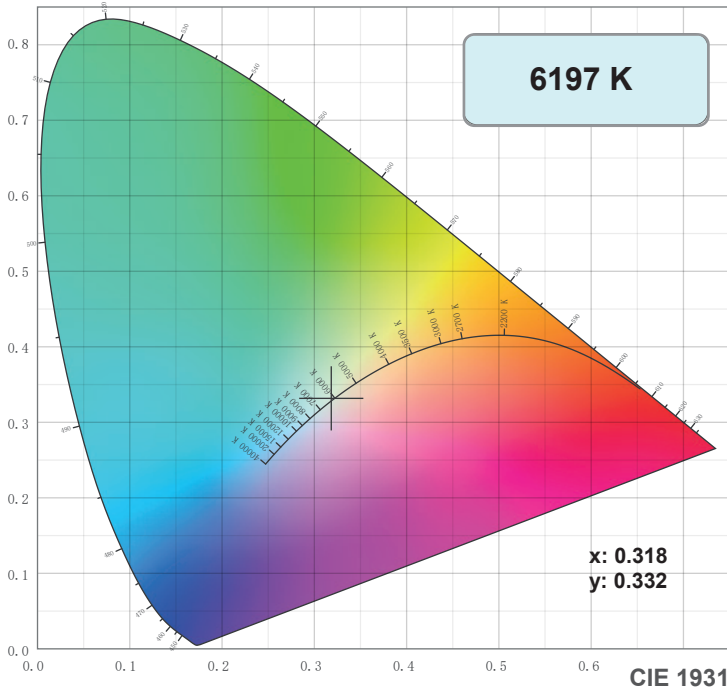
Beam Opening



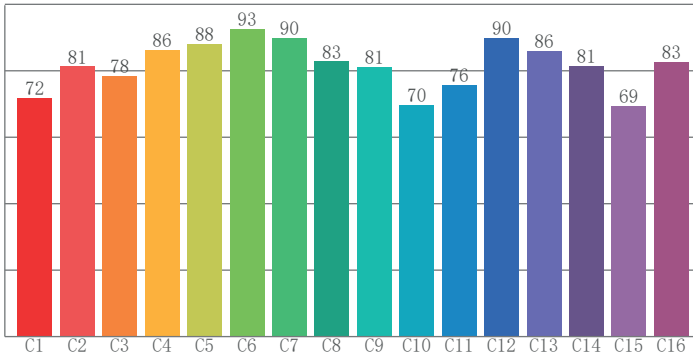
Intensity

Distance (m)	5		10		15		20	
unit	lux	diameter	lux	diameter	lux	diameter	lux	diameter
White	715	7,67	179	15,35	79	23,02	45	30,69

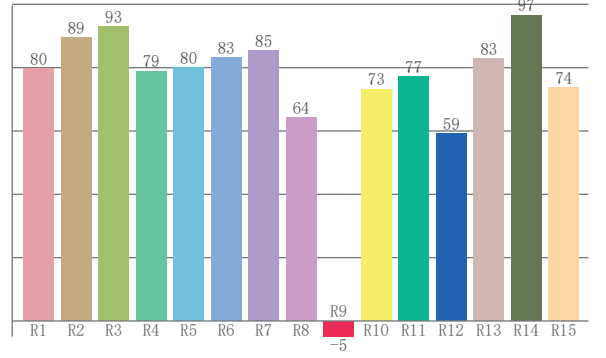
COLOR DETAILS



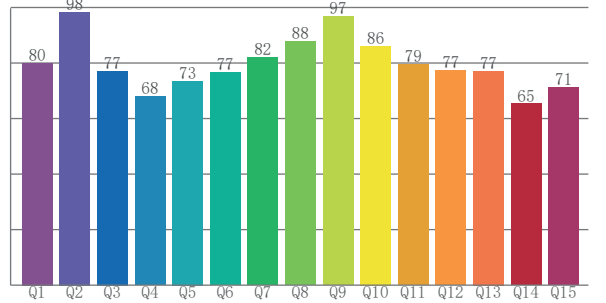
TM-30: 81.5



CRI: 81.7 (R1-R8)



CQS: 77.9



CRI R values, only R1-R8 are used to calculate final CRI value

R1	R2	R3	R4	R5	R6	R7	R8	R9	R10	R11	R12	R13	R14	R15
79.6	89.4	92.9	78.9	80.0	83.2	85.3	64.3	-4.9	73.2	77.2	59.2	82.9	96.6	73.7

TM30 C values, 16 binned values out of total of 99 C values

C1	C2	C3	C4	C5	C6	C7	C8	C9	C10	C11	C12	C13	C14	C15	C16
71.7	81.3	78.5	86.2	87.9	92.7	89.8	82.8	81.2	69.6	75.8	89.9	85.8	81.5	69.3	82.7

CQS Q values

Q1	Q2	Q3	Q4	Q5	Q6	Q7	Q8	Q9	Q10	Q11	Q12	Q13	Q14	Q15
80.1	98.4	77.1	68.0	73.5	76.6	82.0	87.7	96.8	86.2	79.4	77.4	77.1	65.3	71.3

Color parameters

Color temperature	Color rendering index	Red component	Color fidelity	Color gamut	Color quality scale	Color coordinate cie 1931	Color coordinate cie 1931	Color coordinate	Color coordinate	Color deviation from black body
CCT	CRI	CRI R9	TM30 Rf	TM30 Rg	CQS	x	y	u	v	Δuv
6197 K	81.7	-4.9	81.5	92.2	77.9	0.318	0.332	0.201	0.314	0.0014

TM-30 DETAILS

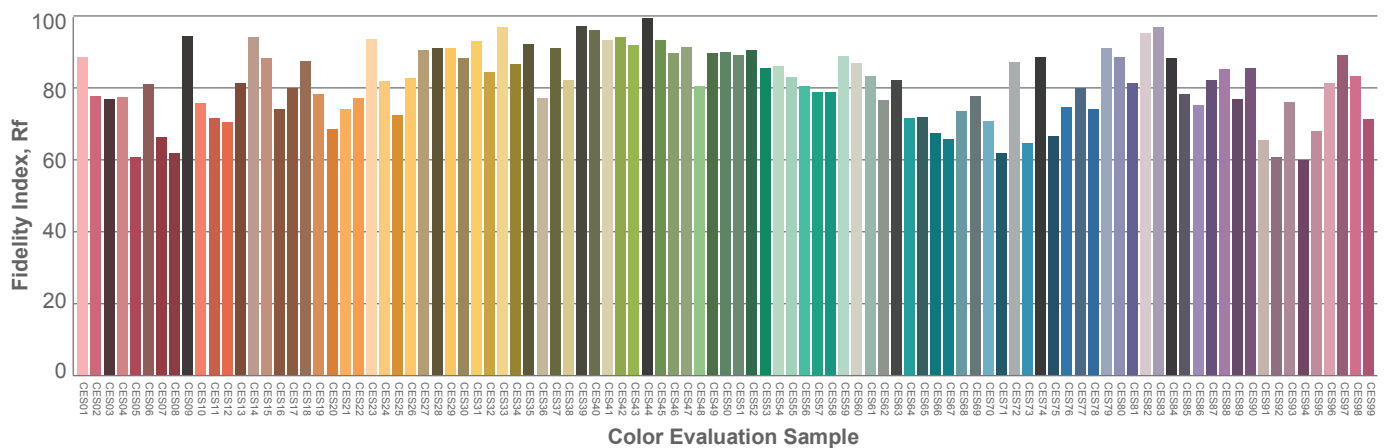
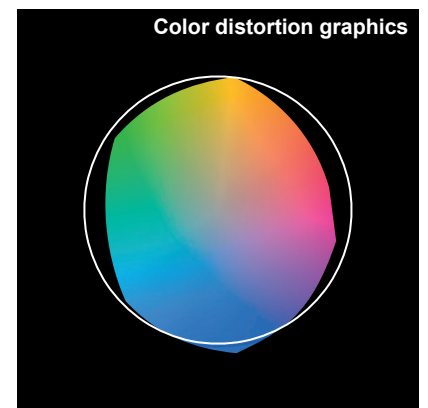
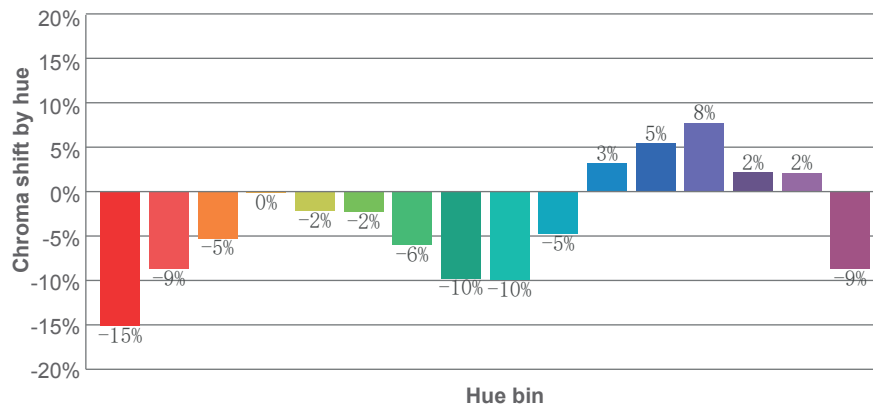
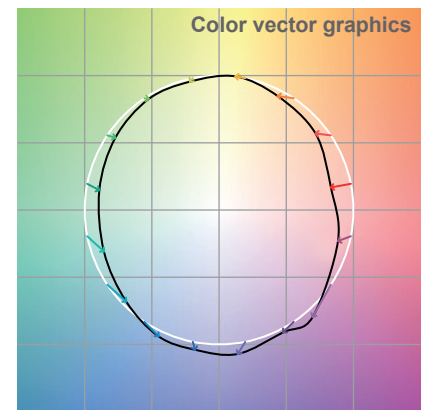
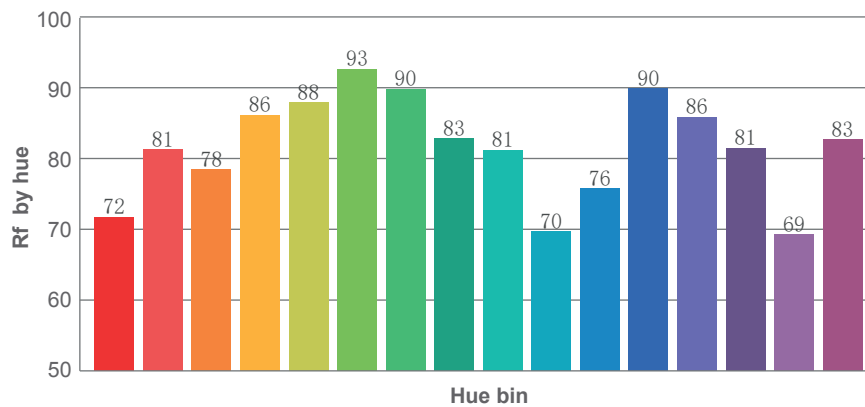
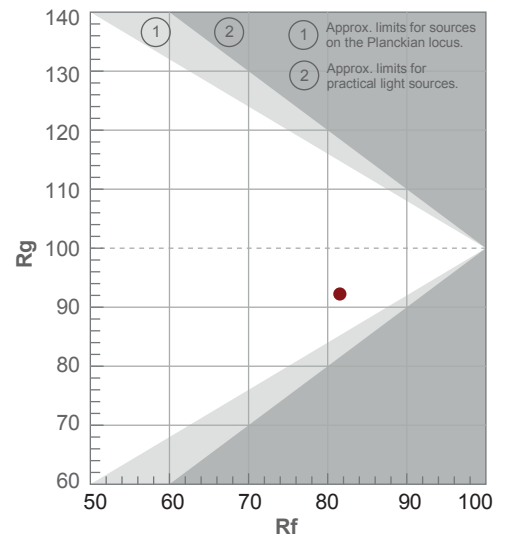
Rf 81.5

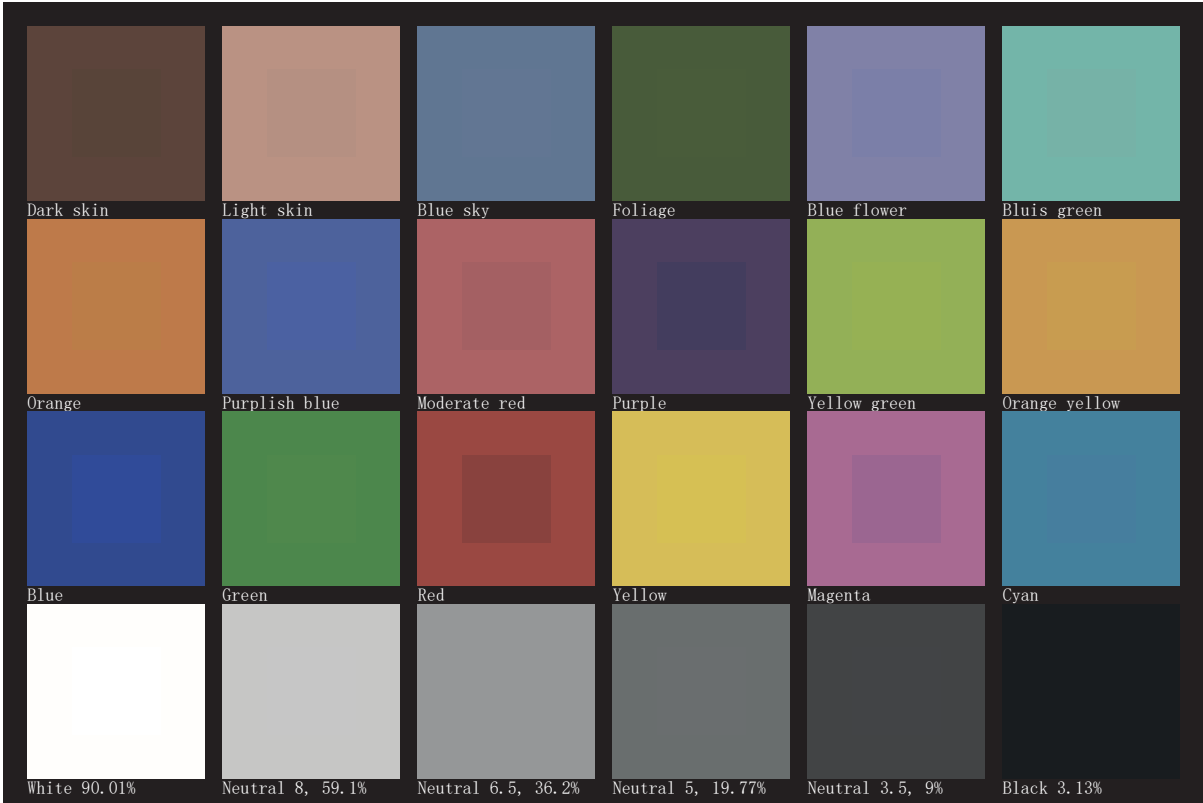
Fidelity index Rf

Rg 92.2

Gamut index Rg

Hue Bin	R _f	Shifts (%)	
		Chroma	Hue
1	72	-15%	0%
2	81	-9%	7%
3	78	-5%	11%
4	86	0%	7%
5	88	-2%	3%
6	93	-2%	-2%
7	90	-6%	-2%
8	83	-10%	3%
9	81	-10%	14%
10	70	-5%	18%
11	76	3%	15%
12	90	5%	3%
13	86	8%	-7%
14	81	2%	-11%
15	69	2%	-28%
16	83	-9%	-5%







AYRTON
Digital Lighting