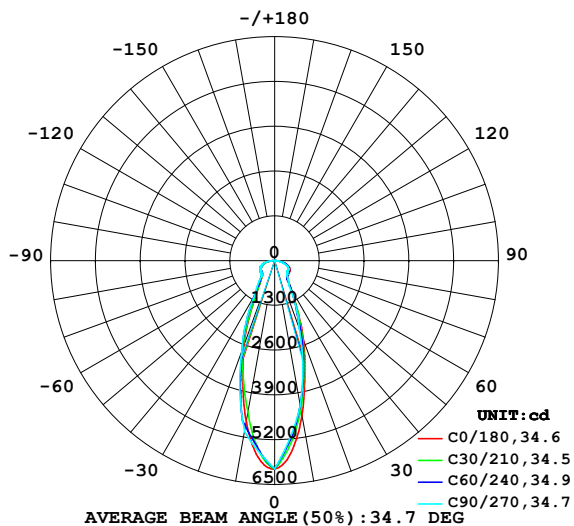


## LUMINAIRE PHOTOMETRIC TEST REPORT

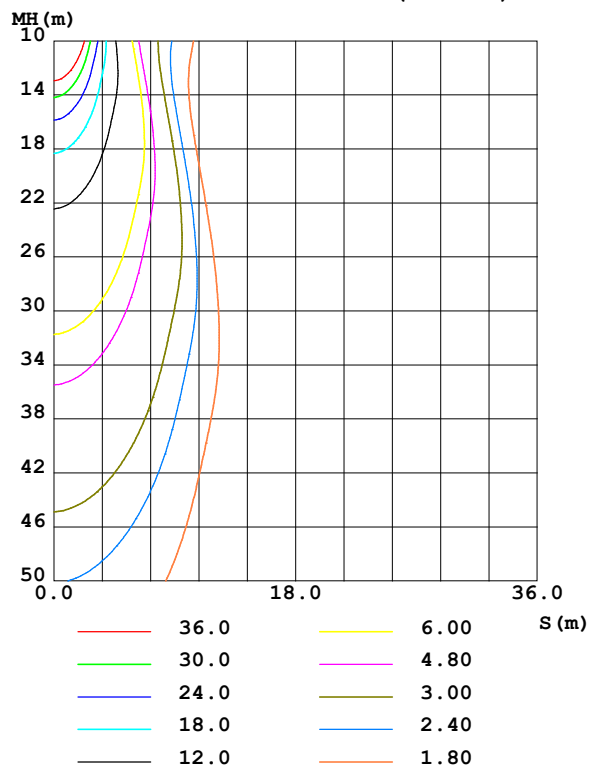
NAME:	TYPE:	WEIGHT:
SPEC.:	DIM.:	SERIAL No.: 001
MFR.: EVERFINE	SUR.:	Shielding Angle:

DATA OF LAMP		PHOTOMETRIC DATA				Eff: 26.77 lm/W
MODEL	Y31807-052	Imax (cd)	6047	S/MH (C0/180)	0.57	
NOMINAL POWER(W)	196	LOR (%)	100.0	S/MH (C90/270)	0.62	
RATED VOLTAGE(V)	220	TOTAL FLUX(lm)	4337.7	<input type="checkbox"/> UP, DN (C0-180)	0.0, 46.6	
NOMINAL FLUX(lm)	4337.72	CIE CLASS	DIRECT	<input type="checkbox"/> UP, DN (C180-360)	0.0, 53.4	
LAMPS INSIDE	1	<input type="checkbox"/> up (%)	0.0	CIBSE SHR NOM	0.50	
TEST VOLTAGE(V)	219.5	<input type="checkbox"/> down (%)	100.0	CIBSE SHR MAX	0.65	

LUMINOUS INTENSITY DISTRIBUTION DIAGRAM



C0 PLANE ISOLUX DIAGRAM (UNIT:lx)



H(□) Range:-90 - 90DEG  
H(□) Interval: 1.0DEG  
Test Speed: HIGH  
Temperature: 25.3°C  
Operators: LJM  
Test Date: 2023-03-25

V(B) Range:-80 - 80DEG  
V(B) Interval: 5.0DEG  
Test System: EVERFINE GO-2000A\_V1 SYSTEM V2.00.461  
Humidity: 65.0%  
Test Distance: 8.920m [K=1.0000]  
Remarks: F-60

## ZONAL FLUX DIAGRAM

### ZONAL FLUX DIAGRAM:

°	C0	C45	C90	C135	C180	C225	C270	C315	°	□ zone	□ total	%lum, lamp
10	4569	4309	4289	4177	4756	4686	5042	4713	0- 10	488.5	488.5	11.3,11.3
20	2467	2348	2090	2110	2621	2619	2793	2736	10- 20	954.9	1443	33.3,33.3
30	950.5	927.9	848.4	796.7	1011	1153	1145	1137	20- 30	749.9	2193	50.6,50.6
40	577.4	546.2	550.1	574.5	588.8	591.2	598.3	618.8	30- 40	459.9	2653	61.2,61.2
50	530.9	503.6	476.0	528.1	533.9	520.9	528.2	553.5	40- 50	419.0	3072	70.8,70.8
60	489.7	472.1	468.7	461.1	497.2	492.7	499.3	516.2	50- 60	450.7	3523	81.2,81.2
70	384.0	355.1	354.9	345.2	396.6	403.9	416.7	415.0	60- 70	434.8	3958	91.2,91.2
80	189.3	160.4	139.1	143.4	212.1	231.8	247.5	230.7	70- 80	308.3	4266	98.3,98.3
90	0.8848	0	0	0	0.7260	0	0	0	80- 90	71.63	4338	100,100
100									90-100			
110									100-110			
120									110-120			
130									120-130			
140									130-140			
150									140-150			
160									150-160			
170									160-170			
180									170-180			
DEG	LUMINOUS INTENSITY:cd									UNIT:lm		

Conical surface Flux(90deg): 2859 lm

%lum = 65.9%

%lamp = 65.9%

Conical surface Flux(130deg): 3748.7 lm

%lum = 86.4%

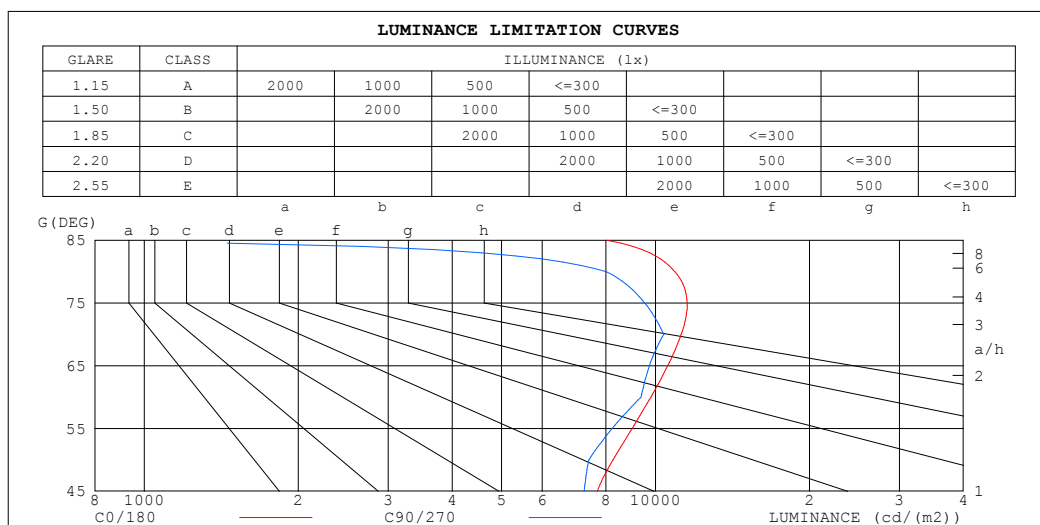
%lamp = 86.4%

H(□) Range:-90 - 90DEG  
H(□) Interval: 1.0DEG  
Test Speed: HIGH  
Temperature:25.3℃  
Operators:LJM  
Test Date:2023-03-25

V(B) Range:-80 - 80DEG  
V(B) Interval: 5.0DEG  
Test System:EVERFINE GO-2000A\_V1 SYSTEM V2.00.461  
Humidity:65.0%  
Test Distance:8.920m [K=1.0000]  
Remarks: F-60

## LUMINANCE LIMITATION CURVES

NAME:	TYPE:	WEIGHT:
SPEC.:	DIM.:	SERIAL No.: 001
MFR.: EVERFINE	SUR.:	Shielding Angle:



LUMINANCE cd/(m2)		
G (DEG)	C0/180	C90/270
85	8028	0
80	10903	8012
75	11532	9518
70	11228	10377
65	10567	9725
60	9795	9375
55	8996	8223
50	8259	7405
45	7691	7250

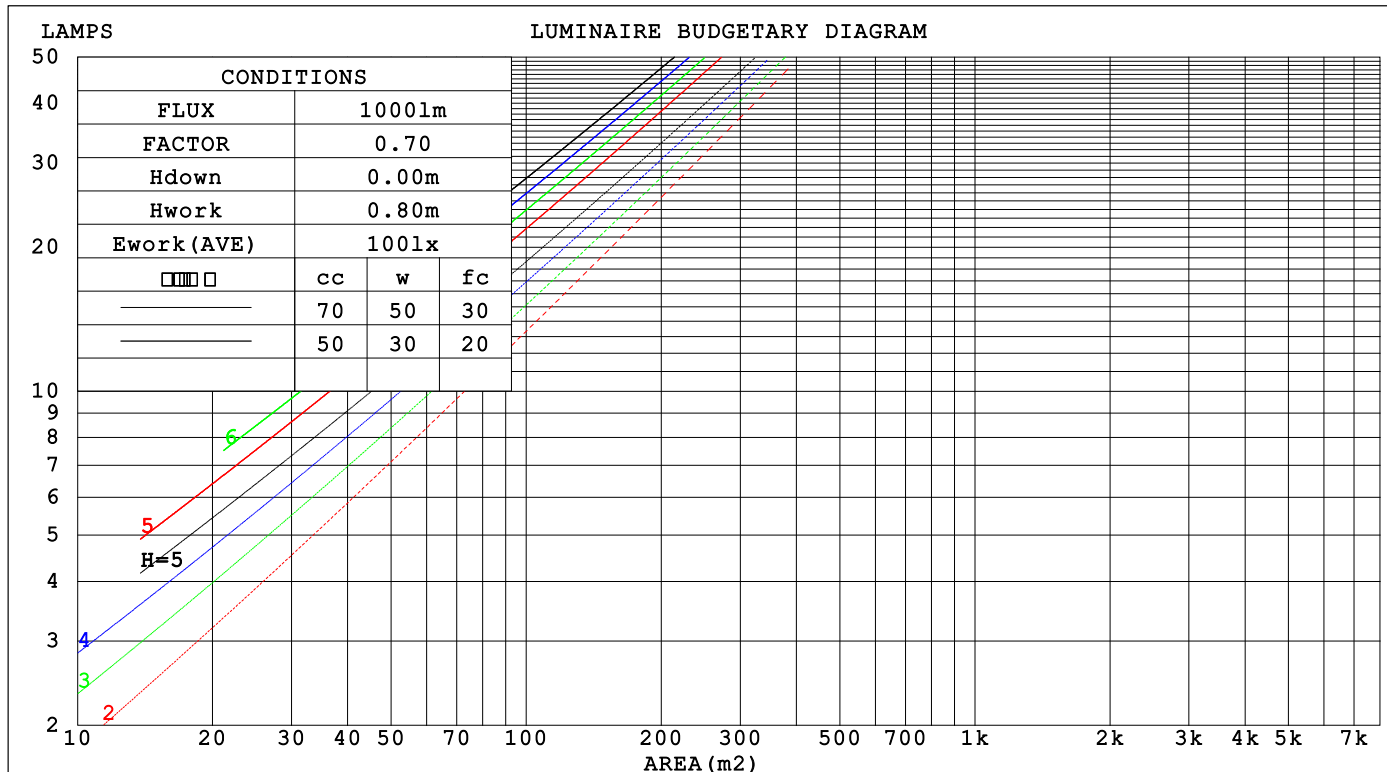
H(□) Range:-90 - 90DEG  
H(□) Interval: 1.0DEG  
Test Speed: HIGH  
Temperature:25.3°C  
Operators:LJM  
Test Date:2023-03-25

V(B) Range:-80 - 80DEG  
V(B) Interval: 5.0DEG  
Test System:EVERFINE GO-2000A\_V1 SYSTEM V2.00.461  
Humidity:65.0%  
Test Distance:8.920m [K=1.0000]  
Remarks: F-60

## CU AND LUMINAIRE BUDGETARY ESTIMATE DIAGRAM

NAME:	TYPE:	WEIGHT:
SPEC.:	DIM.:	SERIAL No.: 001
MFR.: EVERFINE	SUR.:	Shielding Angle:

□cc	80%			70%			50%			30%			10%			0														
□w	50%	30%	10%	50%	30%	10%	50%	30%	10%	50%	30%	10%	50%	30%	10%	0														
□fc	20%			20%			20%			20%			20%			0														
RCR	RCR:Room Cavity Ratio															Coefficients of Utilization(CU)														
0.0	1.19	1.19	1.19	1.16	1.16	1.16	1.11	1.11	1.11	1.06	1.06	1.06	1.02	1.02	1.02	1.00														
1.0	1.06	1.02	.99	1.04	1.00	.97	.99	.97	.94	.96	.93	.91	.92	.90	.88	.86														
2.0	.94	.89	.84	.93	.87	.83	.89	.85	.81	.86	.82	.79	.83	.80	.77	.75														
3.0	.85	.78	.73	.84	.77	.72	.81	.75	.71	.78	.74	.70	.76	.72	.68	.66														
4.0	.78	.70	.65	.77	.70	.64	.74	.68	.63	.72	.67	.62	.70	.65	.62	.60														
5.0	.72	.64	.58	.71	.63	.58	.69	.62	.57	.67	.61	.57	.65	.60	.56	.54														
6.0	.66	.59	.53	.66	.58	.53	.64	.58	.53	.62	.57	.52	.61	.56	.52	.50														
7.0	.62	.55	.49	.61	.54	.49	.60	.53	.49	.59	.53	.49	.57	.52	.48	.47														
8.0	.58	.51	.46	.58	.51	.46	.56	.50	.46	.55	.50	.45	.54	.49	.45	.43														
9.0	.55	.48	.43	.54	.48	.43	.53	.47	.43	.52	.47	.43	.51	.46	.42	.41														
10.0	.52	.45	.41	.51	.45	.41	.51	.45	.40	.50	.44	.40	.49	.44	.40	.39														



H(□) Range:-90 - 90DEG  
H(□) Interval: 1.0DEG  
Test Speed: HIGH  
Temperature:25.3℃  
Operators:LJM  
Test Date:2023-03-25

V(B) Range:-80 - 80DEG  
V(B) Interval: 5.0DEG  
Test System:EVERFINE GO-2000A\_V1 SYSTEM V2.00.461  
Humidity:65.0%  
Test Distance:8.920m [K=1.0000]  
Remarks: F-60

### WEC AND CCEC

NAME:	TYPE:	WEIGHT:
SPEC.:	DIM.:	SERIAL No.: 001
MFR.: EVERFINE	SUR.:	Shielding Angle:

<input type="checkbox"/> cc	80%	70%	50%	30%	10%	0
<input type="checkbox"/> w	50% 30% 10%	50% 30% 10%	50% 30% 10%	50% 30% 10%	50% 30% 10%	0
<input type="checkbox"/> fc	20%	20%	20%	20%	20%	0
RCR	RCR:Room Cavity Ratio					Wall Exitance Coefficients(WEC)
0.0						
1.0	.273 .155 .049	.266 .152 .048	.253 .145 .046	.241 .139 .045	.230 .133 .043	
2.0	.253 .139 .043	.247 .136 .042	.235 .131 .041	.225 .126 .040	.215 .122 .038	
3.0	.232 .123 .037	.226 .121 .037	.217 .117 .036	.207 .114 .035	.199 .110 .034	
4.0	.213 .110 .032	.208 .109 .032	.199 .106 .032	.191 .103 .031	.184 .100 .030	
5.0	.196 .100 .029	.192 .098 .029	.184 .096 .028	.177 .093 .028	.171 .091 .027	
6.0	.181 .091 .026	.178 .090 .026	.171 .088 .026	.165 .086 .025	.159 .084 .025	
7.0	.169 .083 .024	.166 .083 .024	.160 .081 .023	.154 .079 .023	.149 .077 .023	
8.0	.158 .077 .022	.155 .076 .022	.150 .075 .021	.145 .073 .021	.140 .072 .021	
9.0	.148 .072 .020	.146 .071 .020	.141 .070 .020	.137 .068 .020	.132 .067 .019	
10.0	.140 .067 .019	.137 .066 .019	.133 .065 .018	.129 .064 .018	.125 .063 .018	

<input type="checkbox"/> cc	80%	70%	50%	30%	10%	0
<input type="checkbox"/> w	50% 30% 10%	50% 30% 10%	50% 30% 10%	50% 30% 10%	50% 30% 10%	0
<input type="checkbox"/> fc	20%	20%	20%	20%	20%	0
RCR	RCR:Room Cavity Ratio					Ceiling Cavity Exitance Coefficients(CCEC)
0.0	.190 .190 .190	.163 .163 .163	.111 .111 .111	.064 .064 .064	.020 .020 .020	
1.0	.178 .156 .137	.152 .134 .118	.104 .092 .082	.060 .053 .048	.019 .017 .015	
2.0	.167 .132 .103	.143 .114 .089	.098 .079 .062	.057 .046 .036	.018 .015 .012	
3.0	.157 .114 .080	.135 .098 .069	.092 .068 .048	.053 .040 .029	.017 .013 .009	
4.0	.148 .100 .064	.127 .087 .055	.087 .060 .039	.050 .035 .023	.016 .012 .008	
5.0	.139 .089 .052	.120 .077 .045	.082 .054 .032	.048 .032 .019	.015 .010 .006	
6.0	.131 .080 .044	.113 .070 .038	.078 .049 .027	.045 .029 .016	.015 .009 .005	
7.0	.124 .073 .037	.107 .063 .033	.074 .044 .023	.043 .026 .014	.014 .009 .005	
8.0	.117 .067 .032	.101 .058 .028	.070 .041 .020	.041 .024 .012	.013 .008 .004	
9.0	.111 .062 .028	.096 .054 .025	.066 .038 .017	.039 .022 .010	.013 .007 .003	
10.0	.106 .057 .025	.091 .050 .022	.063 .035 .016	.037 .021 .009	.012 .007 .003	

H(☐) Range:-90 - 90DEG  
H(☐) Interval: 1.0DEG  
Test Speed: HIGH  
Temperature:25.3℃  
Operators:LJM  
Test Date:2023-03-25

V(B) Range:-80 - 80DEG  
V(B) Interval: 5.0DEG  
Test System:EVERFINE GO-2000A\_V1 SYSTEM V2.00.461  
Humidity:65.0%  
Test Distance:8.920m [K=1.0000]  
Remarks: F-60

### UGR(Unified Glare Rating) Table

NAME :					TYPE :		WEIGHT :				
SPEC. :					DIM. :		SERIAL No. : 001				
MFR. : EVERFINE					SUR. :		Shielding Angle :				
ceiling/cavity	0.7	0.7	0.5	0.5	0.3	0.7	0.7	0.5	0.5	0.3	
walls	0.5	0.3	0.5	0.3	0.3	0.5	0.3	0.5	0.3	0.3	
working plane	0.2	0.2	0.2	0.2	0.2	0.2	0.2	0.2	0.2	0.2	
Room dimensions		Viewed crosswise					Viewed endwise				
x = 2H	y = 2H	13.9	15.1	14.1	15.3	15.5	13.8	15.1	14.1	15.3	15.4
	3H	16.2	17.4	16.5	17.6	17.8	16.2	17.3	16.4	17.6	17.8
	4H	17.2	18.4	17.5	18.6	18.9	17.0	18.2	17.3	18.4	18.7
	6H	18.0	19.1	18.3	19.3	19.6	17.6	18.6	17.9	18.9	19.2
	8H	18.2	19.2	18.5	19.5	19.7	17.7	18.7	18.0	19.0	19.3
	12H	18.2	19.2	18.6	19.5	19.8	17.6	18.6	18.0	18.9	19.2
4H	2H	14.8	15.9	15.1	16.2	16.4	14.7	15.9	15.0	16.1	16.4
	3H	17.3	18.3	17.6	18.6	18.9	17.2	18.2	17.6	18.5	18.8
	4H	18.4	19.3	18.8	19.6	20.0	18.2	19.1	18.6	19.5	19.8
	6H	19.2	20.0	19.6	20.4	20.7	18.8	19.7	19.2	20.0	20.4
	8H	19.4	20.2	19.8	20.5	20.9	19.0	19.7	19.4	20.1	20.5
	12H	19.5	20.2	19.9	20.6	21.0	18.9	19.6	19.4	20.0	20.4
8H	4H	18.8	19.6	19.2	20.0	20.3	18.7	19.4	19.1	19.8	20.2
	6H	19.8	20.4	20.2	20.8	21.3	19.4	20.0	19.8	20.4	20.8
	8H	20.1	20.6	20.5	21.1	21.5	19.5	20.1	20.0	20.5	21.0
	12H	20.2	20.7	20.7	21.2	21.6	19.5	20.0	20.0	20.5	20.9
12H	4H	18.8	19.5	19.3	19.9	20.3	18.7	19.4	19.1	19.8	20.2
	6H	19.8	20.4	20.3	20.8	21.3	19.5	20.0	19.9	20.4	20.9
	8H	20.2	20.6	20.6	21.1	21.6	19.6	20.1	20.1	20.6	21.0
Variations with the observer position at spacings(CIE Pub.117) :											
S = 1.0H		+ 0.1 / - 0.1					+ 0.1 / - 0.2				
1.5H		+ 0.2 / - 0.3					+ 0.2 / - 0.3				
2.0H		+ 0.2 / - 0.3					+ 0.2 / - 0.4				

CIE Pub.117, 4338 lm Total Lamp Luminous Flux Correct (8log(F/F0) = 5.1)  
Area: 0.1 m2

H(□) Range:-90 - 90DEG  
H(□) Interval: 1.0DEG  
Test Speed: HIGH  
Temperature:25.3℃  
Operators:LJM  
Test Date:2023-03-25

V(B) Range:-80 - 80DEG  
V(B) Interval: 5.0DEG  
Test System:EVERFINE GO-2000A\_V1 SYSTEM V2.00.461  
Humidity:65.0%  
Test Distance:8.920m [K=1.0000]  
Remarks: F-60

### UTILIZATION FACTORS TABLE

NAME:	TYPE:	WEIGHT:
SPEC.:	DIM.:	SERIAL No.: 001
MFR.: EVERFINE	SUR.:	Shielding Angle:

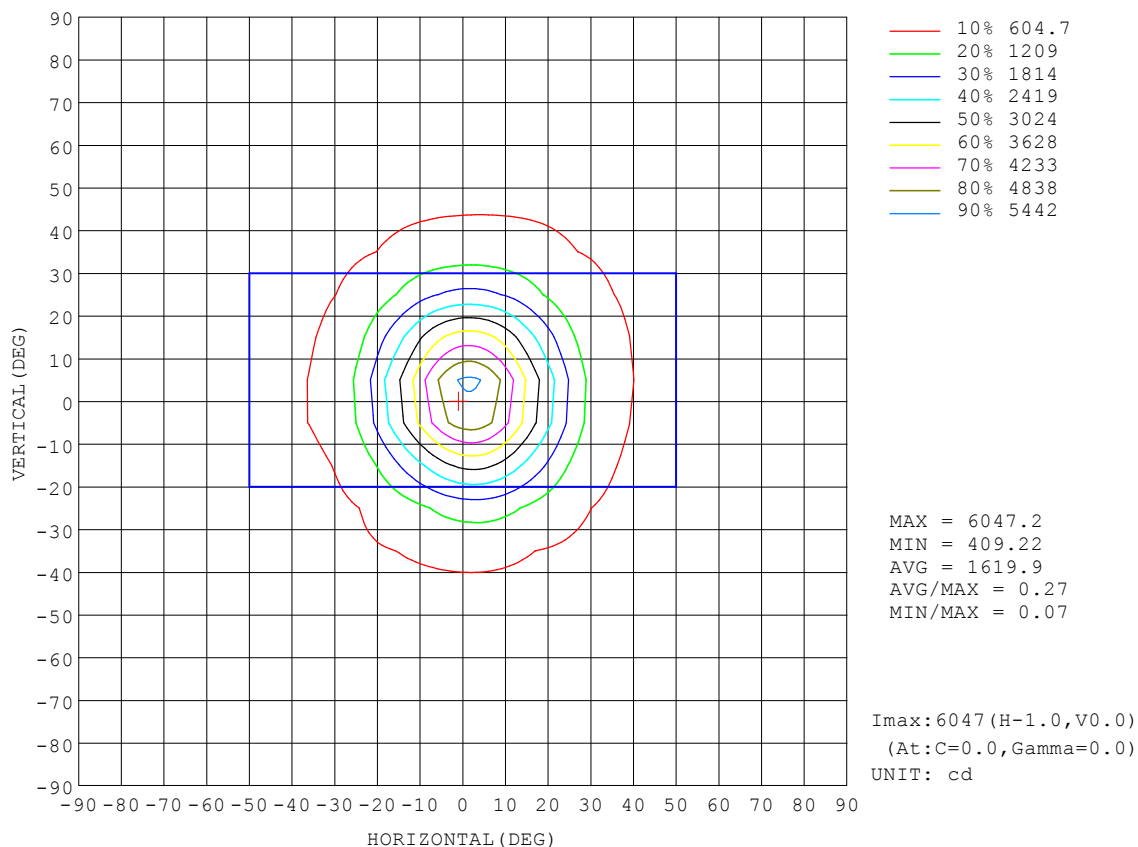
REFLECTANCE										
Ceiling	0.8	0.8	0.8	0.7	0.7	0.7	0.5	0.5	0.5	0
Walls	0.7	0.5	0.3	0.7	0.5	0.3	0.7	0.5	0.3	0
Working plane	0.2	0.2	0.2	0.2	0.2	0.2	0.2	0.2	0.2	0
ROOM INDEX	UTILIZATION FACTORS (PERCENT) $k(RI) \times RCR = 5$									
$k = 0.60$	68	58	53	68	58	53	67	58	52	47
0.80	77	67	61	76	67	61	74	66	60	55
1.00	83	74	68	82	73	67	80	74	67	61
1.25	89	80	74	88	79	73	85	78	73	66
1.50	93	85	79	92	84	78	89	82	77	70
2.00	98	91	85	97	90	85	93	88	83	76
2.50	102	95	90	100	94	89	96	91	87	79
3.00	105	99	94	103	97	93	99	94	91	83
4.00	108	103	99	106	102	98	102	98	95	87
5.00	110	106	103	108	104	101	104	101	98	89
ROOM INDEX	UF (total)									Direct
According to DIN EN 13032-2 2004			Suspended					SHRNOM = 1.25		

H(□) Range:-90 - 90DEG  
H(□) Interval: 1.0DEG  
Test Speed: HIGH  
Temperature:25.3°C  
Operators:LJM  
Test Date:2023-03-25

V(B) Range:-80 - 80DEG  
V(B) Interval: 5.0DEG  
Test System:EVERFINE GO-2000A\_V1 SYSTEM V2.00.461  
Humidity:65.0%  
Test Distance:8.920m [K=1.0000]  
Remarks: F-60

### ISOCANDELA DIAGRAM

NAME:	TYPE:	WEIGHT:
SPEC.:	DIM.:	SERIAL No.: 001
MFR.: EVERFINE	SUR.:	Shielding Angle:



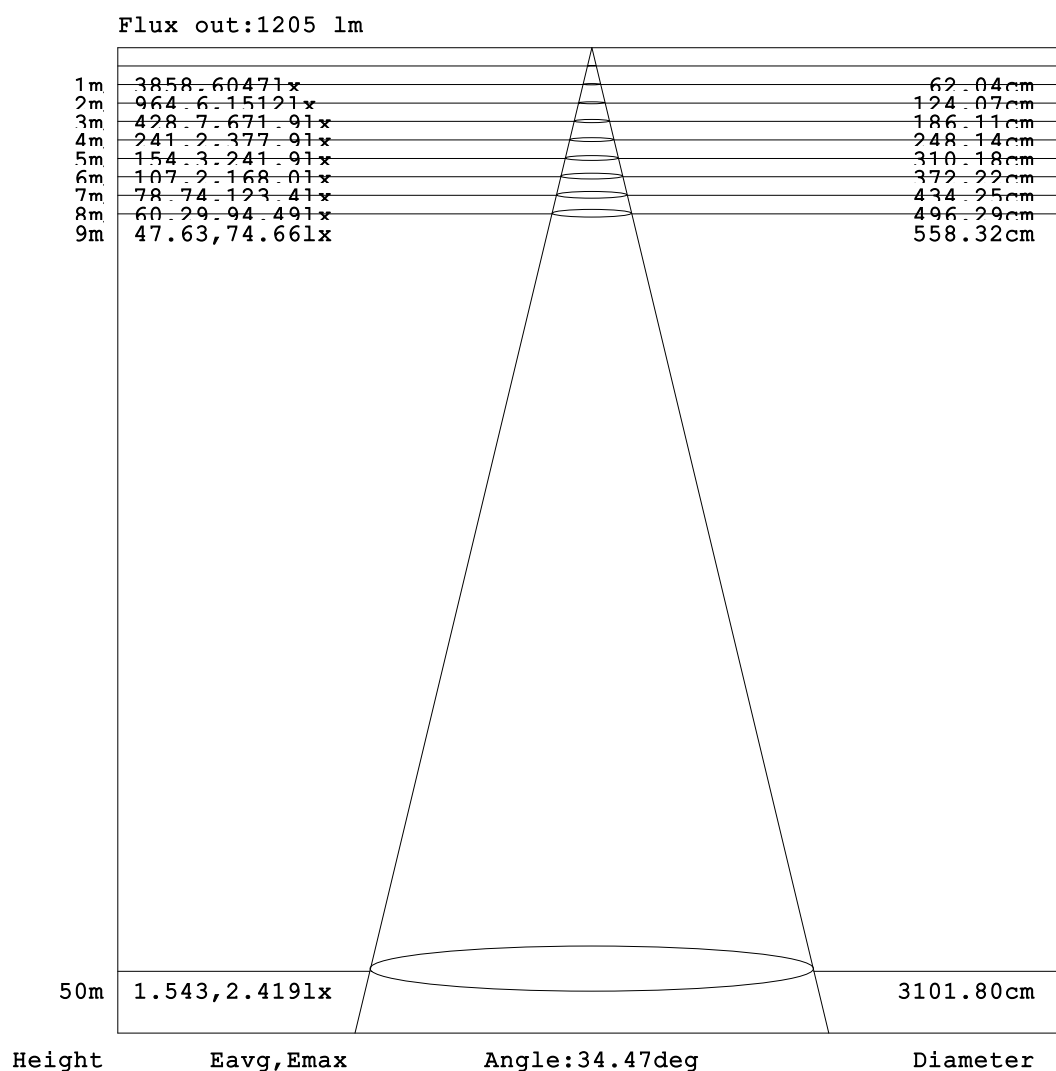
H(□) Range:-90 - 90DEG  
H(□) Interval: 1.0DEG  
Test Speed: HIGH  
Temperature: 25.3°C  
Operators: LJM  
Test Date: 2023-03-25

V(B) Range:-80 - 80DEG  
V(B) Interval: 5.0DEG  
Test System: EVERFINE GO-2000A\_V1 SYSTEM V2.00.461  
Humidity: 65.0%  
Test Distance: 8.920m [K=1.0000]  
Remarks: F-60



### AAI Figure

NAME:	TYPE:	WEIGHT:
SPEC.:	DIM.:	SERIAL No.: 001
MFR.: EVERFINE	SUR.:	Shielding Angle:



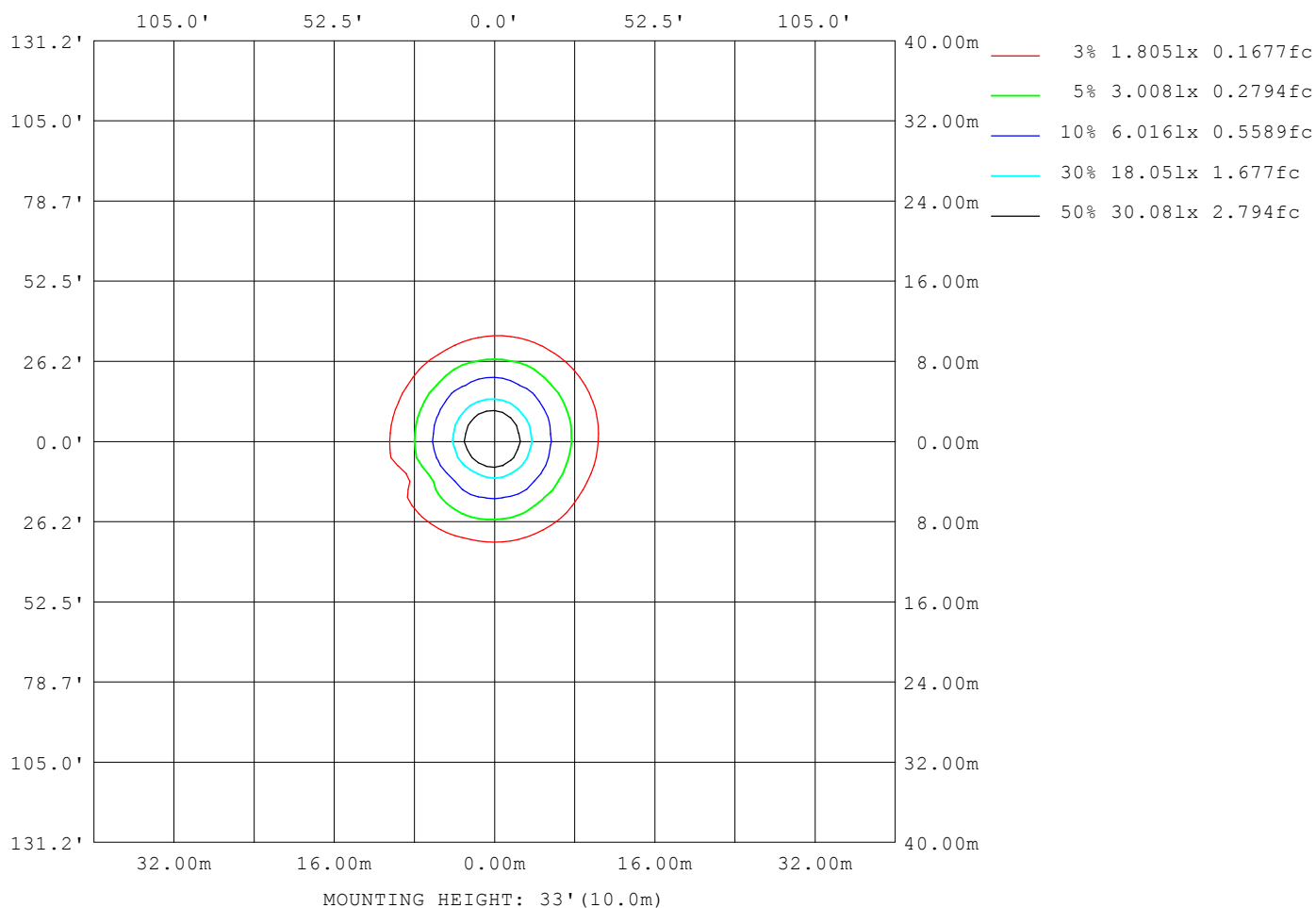
Note:The Curves indicate the illuminated area and the average illumination when the luminaire is at different distance.

H(□) Range:-90 - 90DEG  
H(□) Interval: 1.0DEG  
Test Speed: HIGH  
Temperature:25.3℃  
Operators:LJM  
Test Date:2023-03-25

V(B) Range:-80 - 80DEG  
V(B) Interval: 5.0DEG  
Test System:EVERFINE GO-2000A\_V1 SYSTEM V2.00.461  
Humidity:65.0%  
Test Distance:8.920m [K=1.0000]  
Remarks: F-60

## ISOLUX DIAGRAM

NAME:	TYPE:	WEIGHT:
SPEC.:	DIM.:	SERIAL No.: 001
MFR.: EVERFINE	SUR.:	Shielding Angle:



H(□) Range:-90 - 90DEG  
H(□) Interval: 1.0DEG  
Test Speed: HIGH  
Temperature:25.3°C  
Operators:LJM  
Test Date:2023-03-25

V(B) Range:-80 - 80DEG  
V(B) Interval: 5.0DEG  
Test System:EVERFINE GO-2000A\_V1 SYSTEM V2.00.461  
Humidity:65.0%  
Test Distance:8.920m [K=1.0000]  
Remarks: F-60

### LED Avg.L Report

NAME:	TYPE:	WEIGHT:
SPEC.:	DIM.:	SERIAL No.: 001
MFR.: EVERFINE	SUR.:	Shielding Angle:

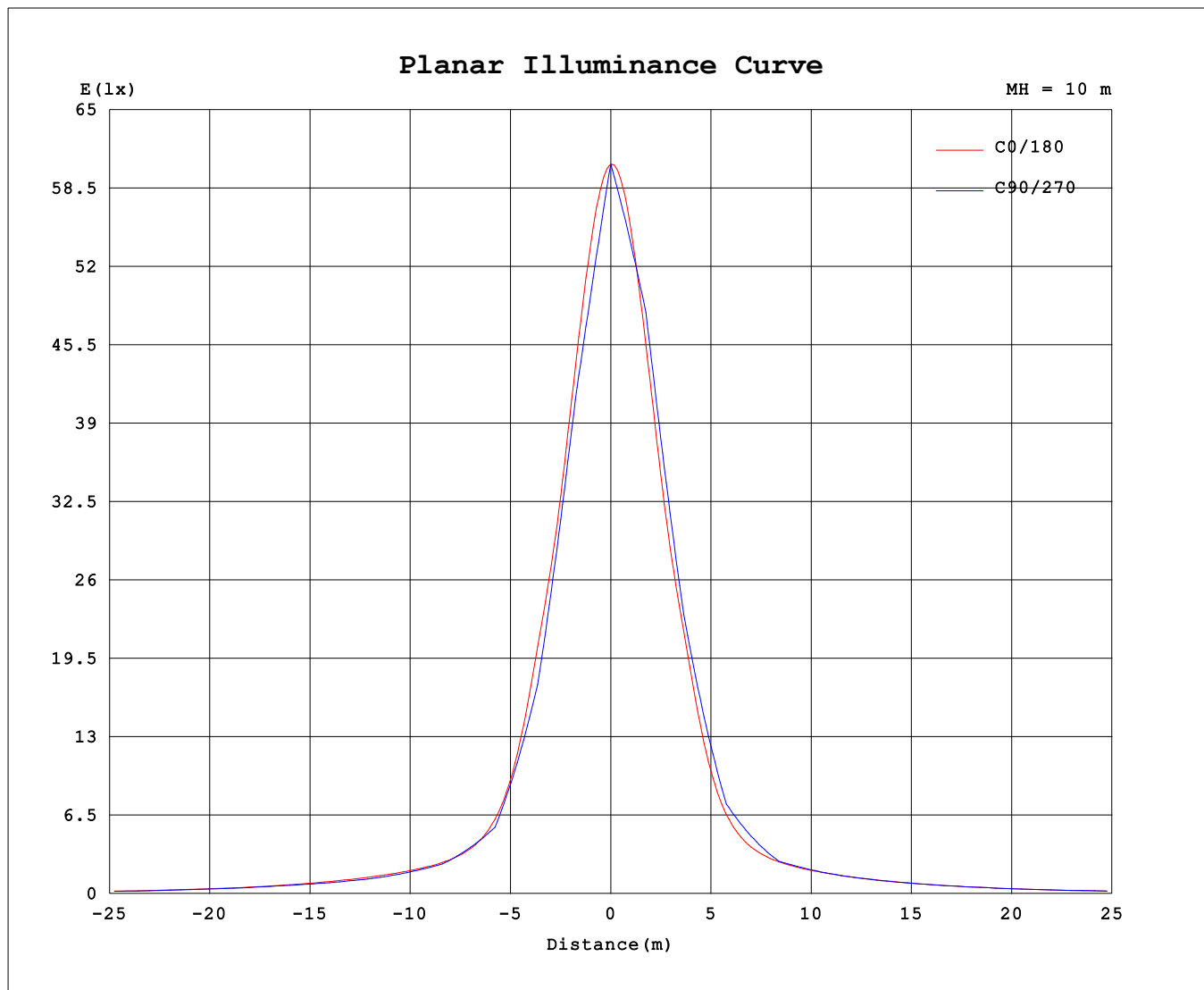
AvgL	cd/m2
L_0~180 (65) av	10683
L_0~180 (75) av	11878
L_0~180 (85) av	9375
L_90~270 (65) av	10275
L_90~270 (75) av	11171
L_90~270 (85) av	0
L_45 (65) av	10479
L_45 (75) av	11464
L_45 (85) av	6077

Standard: GB/T 29293-2012

H(□) Range:-90 - 90DEG  
H(□) Interval: 1.0DEG  
Test Speed: HIGH  
Temperature:25.3℃  
Operators:LJM  
Test Date:2023-03-25

V(B) Range:-80 - 80DEG  
V(B) Interval: 5.0DEG  
Test System:EVERFINE GO-2000A\_V1 SYSTEM V2.00.461  
Humidity:65.0%  
Test Distance:8.920m [K=1.0000]  
Remarks: F-60

### Planar Illuminance Curve



H(□) Range:-90 - 90DEG  
H(□) Interval: 1.0DEG  
Test Speed: HIGH  
Temperature:25.3°C  
Operators:LJM  
Test Date:2023-03-25

V(B) Range:-80 - 80DEG  
V(B) Interval: 5.0DEG  
Test System:EVERFINE GO-2000A\_V1 SYSTEM V2.00.461  
Humidity:65.0%  
Test Distance:8.920m [K=1.0000]  
Remarks: F-60

V(B) Range:-80 - 80DEG  
V(B) Interval: 5.0DEG  
Test System:EVERFINE GO-2000A\_V1 SYSTEM V2.00.461  
Humidity:65.0%  
Test Distance:8.920m [K=1.0000]  
Remarks: F-60

V(B) Range:-80 - 80DEG  
V(B) Interval: 5.0DEG  
Test System:EVERFINE GO-2000A\_V1 SYSTEM V2.00.461  
Humidity:65.0%  
Test Distance:8.920m [K=1.0000]  
Remarks: F-60

V(B) Range:-80 - 80DEG  
V(B) Interval: 5.0DEG  
Test System:EVERFINE GO-2000A\_V1 SYSTEM V2.00.461  
Humidity:65.0%  
Test Distance:8.920m [K=1.0000]  
Remarks: F-60

V(B) Range:-80 - 80DEG  
V(B) Interval: 5.0DEG  
Test System:EVERFINE GO-2000A\_V1 SYSTEM V2.00.461  
Humidity:65.0%  
Test Distance:8.920m [K=1.0000]  
Remarks: F-60